

Login – Saas Environment - Supplier



User Login

User Login

The screenshot shows a web browser window with the URL `auth.mdm.stibosystems.com/auth/realms/cvs-test/protocol/openid-connect/auth?response_type=code&client_id=Step&state=5cf8632f-1c7f-4661-9ebe-054a50667235&login=true&scope=openid&redirect_uri=https%3A%2F%2Fcvstest.scloud.stibo.com%2F...`. The page features the Stibo Systems logo (MASTER DATA MANAGEMENT) and a login form. A red callout '1' points to the browser address bar. A red callout '2' points to the Username input field. A red callout '3' points to the Log In button. Below the form, there is a link for 'Forgot STEP password' and a section for 'IDP managed user log in' with a link for 'CVS Internal Colleagues - Click here'. The footer contains the text 'Powered by Stibo Systems | Copyright © 2021 Stibo Systems, Inc. All rights reserved.'

Description / Steps

1. Enter URL for Stibo
2. Enter Username and password
3. Click on Log In button

User Login - Supplier

Stibo Home Screen – First time login

STIBO SYSTEMS
MASTER DATA MANAGEMENT

cvs-quality

Mobile Authentication

Configure mobile authentication to log in using your account. You can skip this step if you already have a mobile authenticator app set up on your mobile device.

It is recommended to use the Microsoft Authenticator app, but other authenticator apps such as Google Authenticator are also supported. Install the Microsoft Authenticator app on your mobile device by scanning the QR code:

iPhone & iPad Android

Download on the App Store

Next

Powered by Stibo Systems | Copyright © STIBO SYSTEMS, Inc. All rights reserved

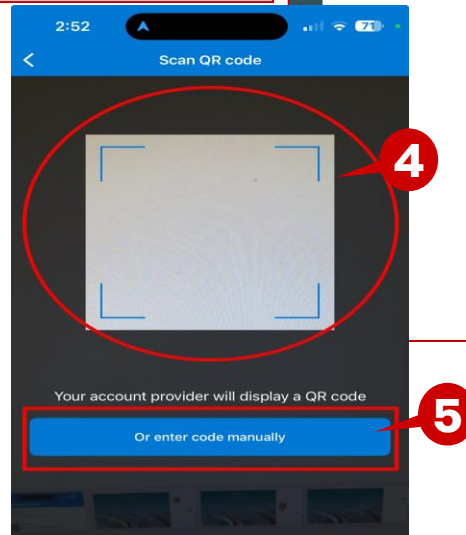
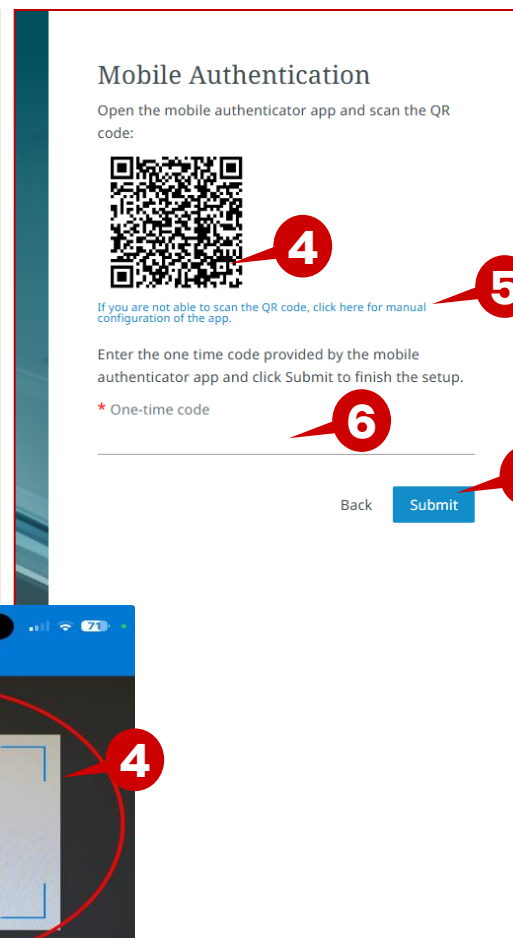
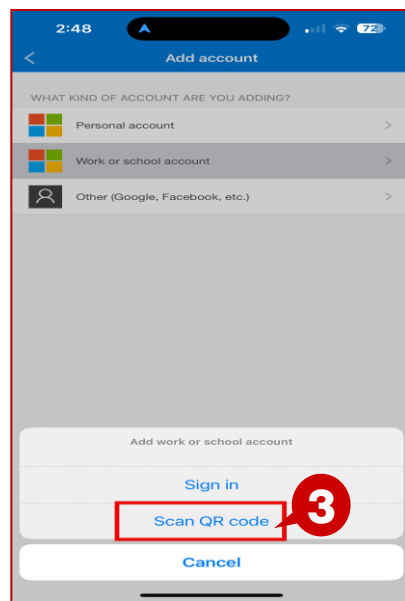
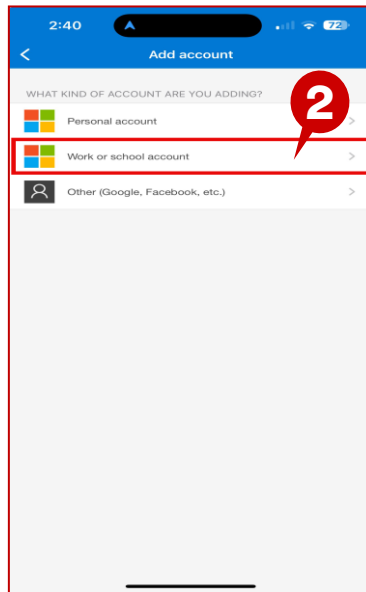
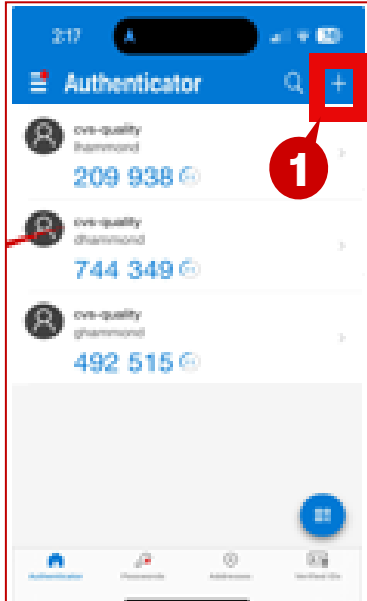
Description / Steps

Upon login the user will be in the Stibo MFA set up screen.

1. Use or install one of the listed mobile applications on your mobile device.
2. Or scan the QR code to download Microsoft Authenticator.
3. Open the app and click on Next

User Login - Supplier

Stibo Home Screen – First time login



Description / Steps

Upon login the user will be in the Stibo MFA set up screen.

1. Click on the Plus Sign
2. Select Work or school account
3. Click on Scan QR code
4. Scan the QR code by aligning the code in the window
5. If you are unable to scan QR code click on the blue hyperlink and manually enter the code by clicking on Or enter code manually.
6. Enter the code that is displaying on the application on your mobile device.
7. Click on Submit

Tip

The one time code is generated in the application that you chose to download and install on your mobile device. The code will refresh every 30 seconds.

User Login - Supplier

Login – Steps after MFA set up has been completed – subsequent logins

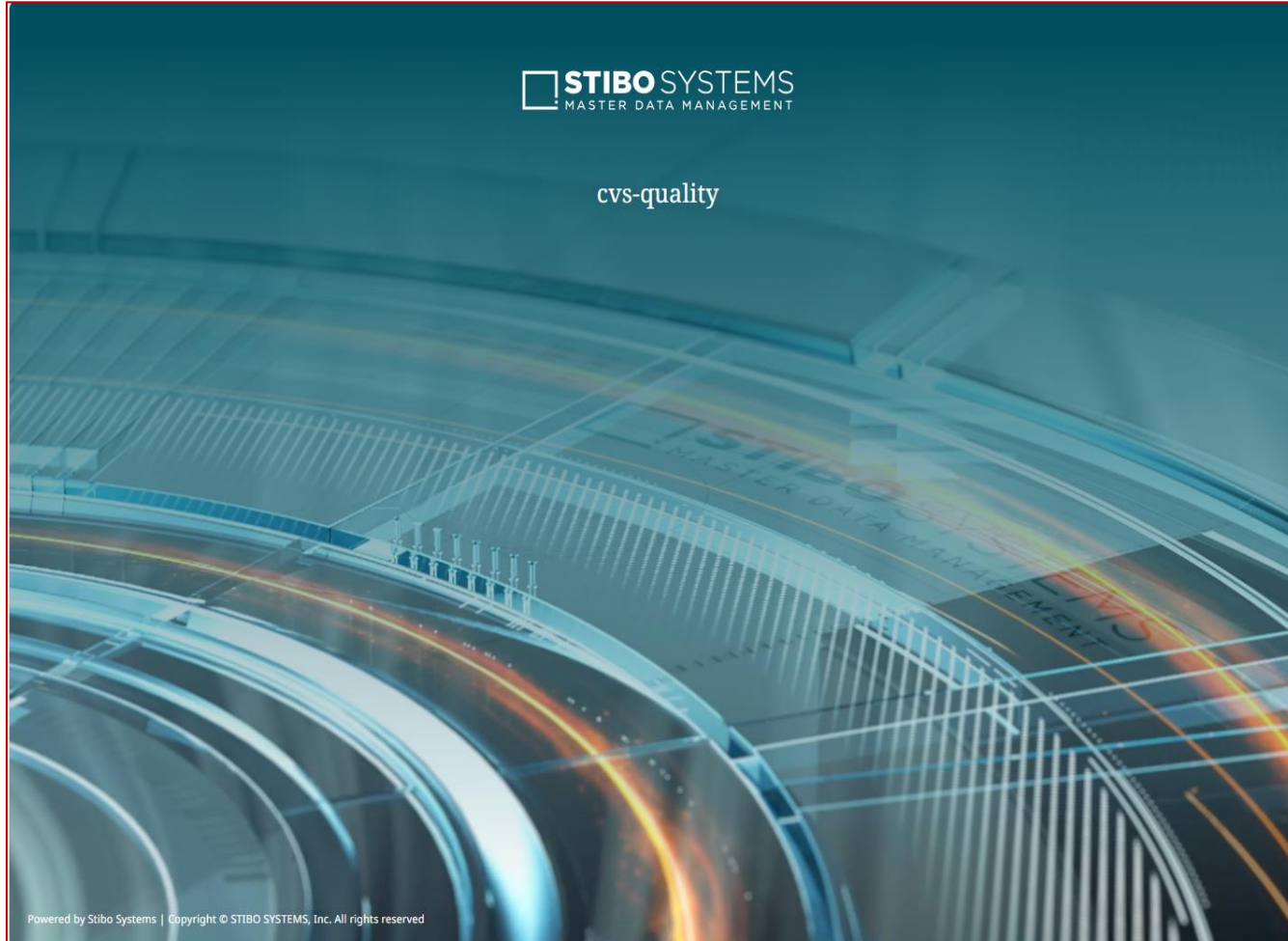
The screenshot shows a web browser window with the URL `auth.mdm.stibosystems.com/auth/realms/cvs-test/protocol/openid-connect/auth?response_type=code&client_id=Step&state=5cf8632f-1c7f-4661-9ebe-054a50667235&login=true&scope=openid&redirect_uri=https%3A%2F%2Fcvstest.scloud.stibo.com%2F...`. The page features the Stibo Systems logo (MASTER DATA MANAGEMENT) and a login form. A red callout '1' points to the browser address bar. A red callout '2' points to the 'Username' input field. A red callout '3' points to the 'Log In' button. The form includes fields for 'Username' and 'Password', a 'Forgot STEP password' link, and a 'Log In' button. Below the form, there is a section for 'IDP managed user log in' with a link for 'CVS Internal Colleagues - Click here'. The footer contains the text 'Powered by Stibo Systems | Copyright © 2021 Stibo Systems, Inc. All rights reserved.'

Description / Steps

1. Enter URL for Stibo
2. Enter Username and password
3. Click on Log In button

User Login - Supplier

Login – Steps after MFA set up has been completed – subsequent logins



One time code

Open your mobile authenticator app and enter the one time code within its validity time. If you do not have a mobile authenticator app or the app is not configured yet, please contact your admin to reset the multifactor authentication configuration for your account.

One time code

[Restart login](#)

[Continue](#)

Description / Steps

Upon login the user will be in the Stibo MFA code entry screen.

1. Get the code from your mobile device by opening the application that you downloaded at the initial setup.
2. Enter the code
3. Click on Submit

1